



Model ID

APX300

Model No. NM-EFE3AA

- The APX 300 contributes to high-level productivity in the etching process thanks to high speed LED film processing
- The LED substrate surface can be etched to diverse shapes such as trapezoidal and conical form
- Housing the equipment in one box contributes to increased area productivity

Model ID	APX300
Model No.	NM-EFE3AA
Plasma source	ICP Plasma
Process gas	4 Lines (standard) (Maximum 6 Lines: Chlorinated Gas, Fluoride Gas, Ar, O ₂ , He, etc.)
Wafer size *1	φ100 mm wafer with orientation flat (standard)
Dimensions (mm)	W 1 350 × D 2 230 × H 2 000 (Does not include touch panels, operation section and signal tower)
Mass	2 100 kg (differs depending on machine configuration)
Power source	3-phase AC 200 / 208 / 220 / 230 / 240 ±10 V、50 / 60 Hz、21.00 kVA
Pneumatic source	0.5 MPa to 0.7 MPa, 250 L/min (A.N.R.)
N ₂ Source	0.1 MPa to 0.2 MPa, 50 L/min (A.N.R.)

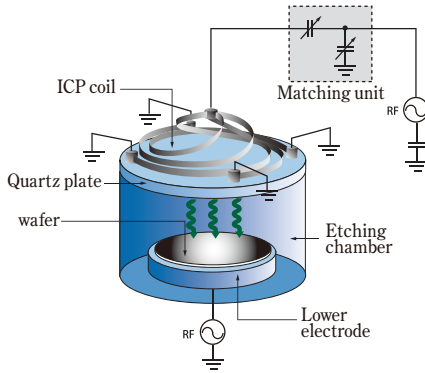
*1 : For other size wafers, please contact us

*2 : 2 line 3-phase power source, and this shows the total

Advanced ICP and Multi-ESC realize high accuracy & high productivity

MSC (Multi Spiral Coil) ICP
Original Advanced ICP

[MSC-ICP]



High Efficiency

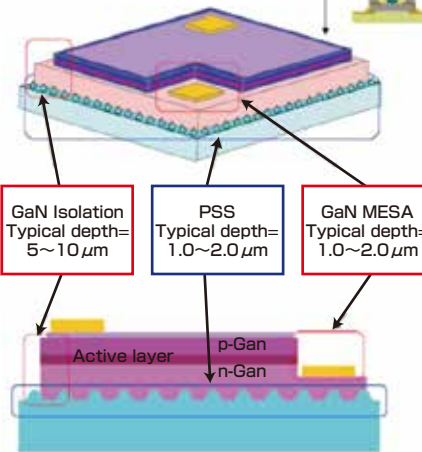
Good Uniformity

Multi - ESC

Multi number of wafers can be etched at once with Direct cooling in one chamber

GaN and Sapphire PSS application

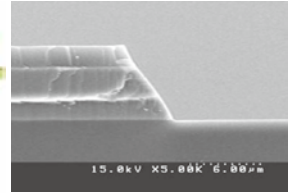
LED Chip structure



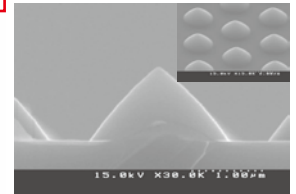
GaN Isolation
Typical depth = 5~10 μm

PSS
Typical depth = 1.0~2.0 μm

GaN MESA
Typical depth = 1.0~2.0 μm



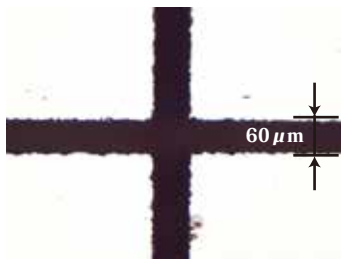
GaN processing



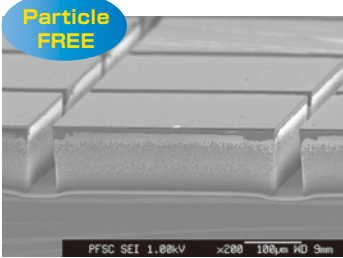
Sapphire processing

APX300 can be used for Plasma Dicing

Blade Dicing

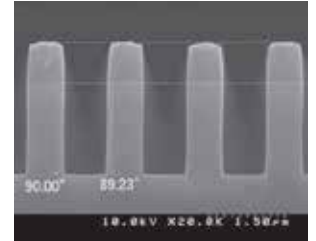
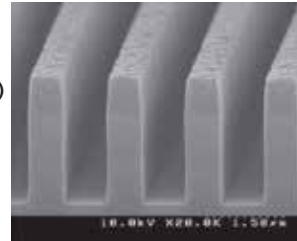


Plasma Dicing

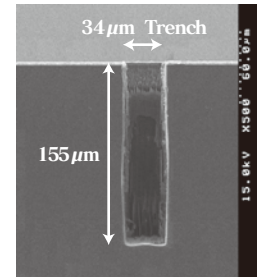
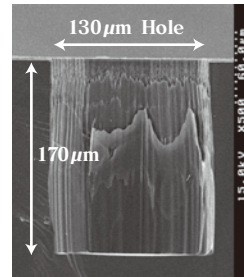


High productivity for Hard fabrication material

(Example) Quartz



(Example) SiC



⚠ Safety Cautions

● Please read the User's Manual carefully to familiarize yourself with safe and effective usage procedures.

● To ensure safety when using this equipment all work should be performed according to that as stated in the supplied Operating Instructions. Read your operating instruction manual thoroughly.

Panasonic Group products are built with the environment in mind.

<http://www.panasonic.com/global/corporate/sustainability.html>



Panasonic Group builds Environmental Management System in the factories of the world and acquires the International Environmental Standard ISO 14001.

Inquiries...

Panasonic Corporation
Process Automation Business Division

3-1-1 Inazu-cho, Toyonaka City, Osaka 561-0854, Japan
TEL +81-6-6866-8630
FAX +81-6-6862-0422

All data as of January 1, 2018

Ver. January 1, 2018

© Panasonic Corporation 2018